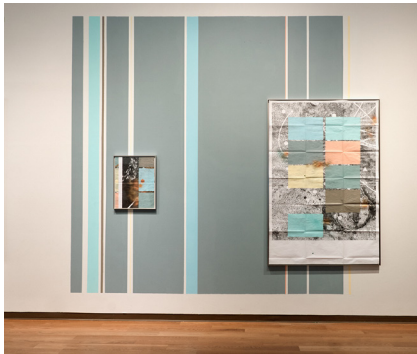


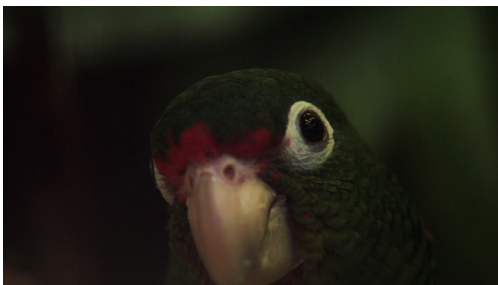
# Relational Undercurrents: Contemporary Art of the Caribbean Archipelago

**molaa** ■ ■ ■  
MUSEUM OF LATIN AMERICAN ART

628 Alamilos Ave., Long Beach, CA 90802  
(562)437-1689 ■ www.molaa.org



**Adler Guerrier** (Haiti/United States, b. 1975)  
*The Fold* series, 2016  
Mixed media installation as installed at the Orlando  
Museum of Art  
Courtesy of the artist and David Castillo Gallery, Miami.



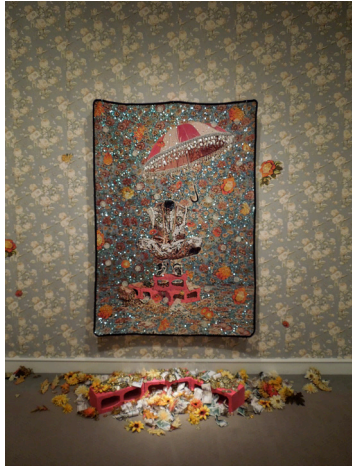
**Allora & Calzadilla** (United States & Cuba, b. 1974  
& 1971)  
still from *The Great Silence*, 2014  
Video, single channel version, 16:32.  
Courtesy of the artists.



**Antonia Wright** (Cuba/United States, b. 1979)  
*Suddenly We Jumped*, 2014  
Durst Lambda Digital C-print, 20 x 30 in.  
Photo by Rudy Duboue. Courtesy of the artist and Luis De  
Jesus Los Angeles.



**Fermín Ceballos** (Dominican Republic, b. 1978)  
*Aislamiento / Isolation*, 2005  
Performance in Santo Domingo. Photo by Sayuri  
Guzmán. Courtesy of the artist.



**Ebony G. Patterson** (Jamaica, b. 1981)

*Untitled (Goffa)* from the series *Out and Bad*, 2012

Mixed media jacquard woven tapestry with drug money, fabric flowers, spray enamel on cinderblocks, and wallpaper, 78 x 54 in.

Courtesy of the Collection of Kyle DeWoody, Brooklyn, the artist and Monique Meloche Gallery, Chicago



**Tania Bruguera** (Cuba, b.1968)

*The Francis Effect*, 2014

Arte de Conducta campaign

Photo by Gaetano Olmo Stuppia.

Courtesy of Estudio Bruguera

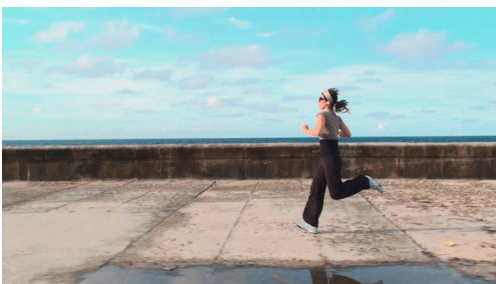


**David Gumbs** (St. Martin, b. 1977)

still from *Water and Dreams*, 2014

Digital video, 06:14.

Courtesy of the artist.



**Humberto Díaz** (Cuba, b. 1975)

*Déja Vu*, 2008

Video, ed. 5/5, 20:20.

Courtesy of the artist.



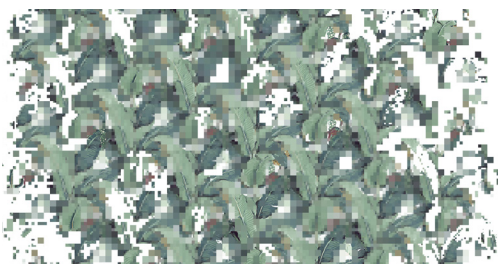
**Sasha Huber** (Switzerland/Haiti, b. 1975)  
*Shooting Back – Reflection on Haitian Roots, Christopher Columbus*, 2004  
Metal staples on wood, 31 1/2 x 45 1/4 in.  
Private collection.  
Courtesy of Private Collector.



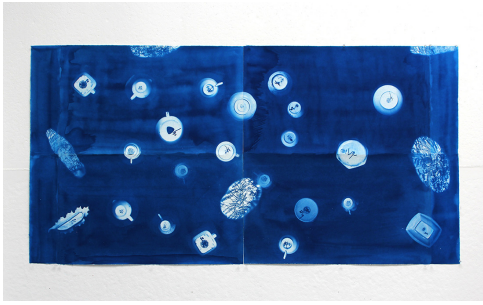
**Nadia Huggins** (Trinidad and Tobago, b. 1984)  
*No. 25 Circa No Future*, 2014.  
Digital photograph, 22 1/2 x 30 in.  
Courtesy of the artist.



**Jeannette Ehlers** (Denmark, b. 1973)  
*Black Bullets*, 2012  
Video, 05:05.  
Courtesy of the artist.



**Joiri Minaya** (Dominican Republic, b. 1990)  
*Redecode: A Tropical Theme is a Great Way to Create a Fresh, Peaceful, Relaxing Atmosphere / Redecode: un tema tropical es una gran forma de crear una atmósfera fresca, relajante y pacífica*, 2015  
Wallpaper, variable dimensions.  
Courtesy of the artist.



**Juana Valdes** (Cuba/United States, b. 1963)  
*Under View of the World / El Mundo desde abajo*, 2015  
Cyanotype panel, 30 x 40 x 2 in.  
Courtesy of the artist.



**Jean-Luc de Laguarigue** (Martinique, b. 1956)  
*Untitled* from the series *Nord Plage, Martinique*, 2003  
Photograph, 25 3/8 x 23 3/8 in.  
Courtesy of the artist.



**Engel Leonardo** (Dominican Republic, b. 1977)  
*Antillas*, 2013  
Concrete, steel, acrylic, enamel, and endemic native plants, 36 1/4 x 9 7/8 x 6 in. each.  
Courtesy of the artist and KADIST, Paris and San Francisco.



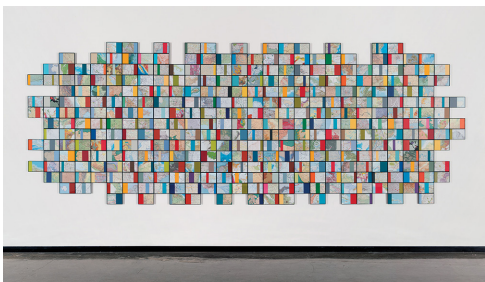
**Miguel Luciano** (Puerto Rico, b. 1972)  
*Sela and Adi, SmART Power, Kenya*, 2012  
Photographic documentation of social practice project, variable dimensions.  
Courtesy of the artist.



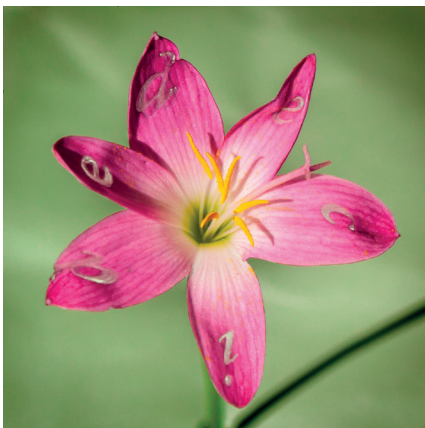
**Marlon Griffith** (Trinidad and Tobago, b. 1976)  
*No Black in the Union Jack*, 2014  
Procession at Tate Modern, London. Photo by Akiko Ota.  
Courtesy of the artist



**Maria Elena González** (Cuba/United States, b. 1957)  
“7”, 2011  
Epoxy and stainless steel, 33 x 33 x 1/4 in.  
Courtesy of the artist and Hirschl & Adler Modern, New York



**Nayda Collazo-Llorens** (Puerto Rico, b. 1968)  
*Geo Dis/connect 3*, 2014/2017  
Mixed media with collected maps, variable dimensions.  
Courtesy of the artist and LMAKgallery, New York.



**Glenda Salazar Leyva** (Cuba, b. 1982)  
*Decide* from the series *What Doesn't Kill You Makes You Stronger* / *Decide* de la serie *Lo que no te mata te fortalece*, 2013 -16  
Photograph, 24 x 24 in.  
Courtesy of the artist



**Janine Antoni** (Bahamas, b. 1964)

*Touch*, 2002

Video projection, ed. 5 + 2 AP, 09:37 min.

Courtesy of the artist and Luhring Augustine, New York



**Scherezade Garcia** (Dominican Republic, b. 1966)

*In My Floating World, Landscape of Paradise* from the series *Theories on Freedom*, 2011

Plastic tubes, prints, rubber and illustrations, variable dimensions

Courtesy of the artist and the Lyle O. Reitzel Gallery, New York



**Fausto Ortiz** (Dominican Republic, b. 1970)

*Fragments* from the series *Exodus*, 2013

Digital photograph, 20 x 30 in.

Courtesy of the artist



**Nicole Awai** (Trinidad, b. 1966)

*Dream On – Happy Ending...*, 2011

Acrylic paint, nail polish, resin, nylon netting, metal angle line, metal flashing, construction foam, paper and wood, 53 x 58 x 27 in.

Courtesy of the artist



**Tony Capellán** (Dominican Republic, b. 1955)

*Mar invadido*, 2015

Found objects from the Caribbean Sea, variable  
dimensions

Courtesy of the artist