

# PROFILE

{ L I L I A N G A R C I A - R O I G }



## Exhibition

### “EN PLEIN” SIGHT: Paintings by Lilian Garcia-Roig

On view September 17th through December 10th  
at the Polk Museum of Art, Lakeland

www.polkmuseumofart.org

LILIAN GARCIA-ROIG IS A native Cuban and currently a professor of art at Florida State University. She has been practicing the art of landscape painting *en plein air* over the past several years, primarily in New England, the Pacific Northwest and North Florida.

Although her work is rooted in historical convention, she transcends the typical definition of a landscape painter—her large-scale, surface leavened works transform the plane of the canvas into a painterly relief and pivot between the recognizable and the abstract. From afar, the paintings appear highly realistic but upon closer inspection the images fade into pure abstraction. Her impastoed surfaces, created with brushes, gloved fingers and squeezed out paint, elicit comparisons to Vincent Van Gogh and Willem de Kooning.

“I try to capture the character of seemingly ordinary landscapes in a way that reflects a passionate engagement with the scene and with the painting process,” the artist explained, “I work on-site because it is the only way for

a painter to capture the multi-dimensional experience of a landscape, focusing in and out at various depths, noticing and trying to balance various relations among spatial elements such as color, size, shape and visual weight... Moreover, by working on-site, I can achieve an expanded sense of time in the work. Monet famously remarked

that he could notice the light change in a scene after only seven minutes, so his problem was how to capture the overall impression of a specific moment in so little time. For me, as the light changes in the scene, different features come to my attention and are recorded on the canvas... In this way I see more than what is apparent at any one moment. This is not available in a photograph, which only captures a single monocular instant. Our memory of places is much more like a summary of highlighted moments experienced at differ-

ent times but compressed into one intense impression.”

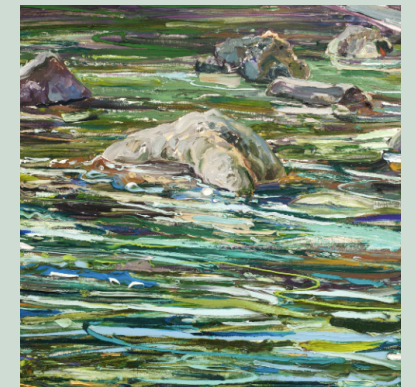
Garcia-Roig obtained her M.F.A. in 1990 from the University of Pennsylvania. She has received numerous awards, including the Joan Mitchell Foundation Award in Painting, State of Florida Individual Artist Grant and NEA Grant as well as res-

idencies to Skowhegan, MacDowell and Vermont Center Colonies. Her work has appeared in several recent solo exhibitions, including *Hyperbolic Nature* (2010) at MOCA, Jacksonville; *More Than a Brush With Nature* (2010) at UNF Gallery, Jacksonville; *Caught in the Act*



Garcia-Roig  
**TRANSCENDS  
THE TYPICAL  
definition of a  
LANDSCAPE  
painter.**

*of Looking: Post-Modern Plein-Air* (2010) at Broward College Gallery, Hollywood; *Nature of Being There* (2009) at the Bob Rauschenberg Gallery, Edison College, Ft. Meyers; and *Cumulative Nature* (2007) at Carol Jazzar Gallery, Miami. **ON VIEW**



## OPPOSITE PAGE:

1. ST. MARK'S INLET (FLORIDA),  
2006, 48 x 36"

## ABOVE (TOP TO BOTTOM):

1. BIG RIVER ROCKS (WASHINGTON),  
2010, 30 x 30"  
2. CENTRAL PANEL OF FALL FLOWS  
TRIPTYCH (NORTHEAST), 2008, 48 x 48"  
3. WATER AND ROCK FLOWS  
(WASHINGTON), 2010, 48 x 48"

## LEFT:

LILIAN GARCIA-ROIG,  
COURTESY OF THE ARTIST